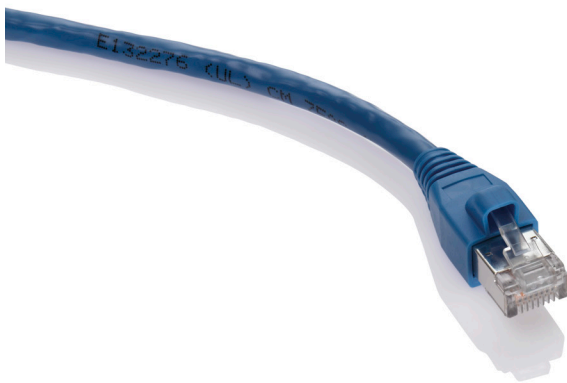


## eXtreme® CAT 6A LSZH Patch Cords

### APPLICATION

Leviton eXtreme CAT 6A LSZH Patch Cords exceed all channel and component performance requirements in ANSI/TIA-568-C.2 and ISO 11801 Class E<sub>a</sub> from 1MHz to 500MHz to support 10GBASE-T applications (IEEE 802.3an). eXtreme CAT 6A patch cords are backwards compatible to support 100BASE-T and 1000BASE-T and provide a seamless network migration path to 10 Gigabit Ethernet and other high bandwidth applications.



### SPECIFICATION

eXtreme CAT 6A LSZH patch cords shall meet or exceed the requirements for CAT 6A channel and component performance described in ANSI/TIA-568-C.2 and ISO 11801. The patch cord shall be a stranded conductor with a standard 8 position modular plug on each end. The cords shall be available in 1, 2, 3, and 5 meter lengths. The manufacturer shall provide a one-year limited product warranty. The manufacturer shall also provide an extended warranty against defects in material and workmanship, and an application guarantee when installed as part of a certified system.

### WARRANTY INFORMATION

For a copy of Leviton product warranties, visit [www.leviton.com/warranty](http://www.leviton.com/warranty).

### COUNTRY OF ORIGIN

Taiwan

### FEATURES

- F/UTP stranded construction provides exceptional alien crosstalk (AXT) suppression in CAT 6A channel
- Stranded conductors ensure extended life and long-term channel integrity
- Color matched cords and boots
- Available in three different ANSI/TIA 606-B compatible colors
- Available in four standard lengths (custom lengths available)

### STANDARDS COMPLIANCE

Meets the following standards:

- ANSI/TIA-568-C.0
- ANSI/TIA-568-C.1
- ANSI/TIA-568-C.2 CAT 6A
- ISO 11801 Class E<sub>a</sub>
- IEEE 802.3an 10GBASE-T
- IEEE 802.3ab 1000BASE-T
- IEEE 802.3u 100BASE-T
- IEEE 802.3af Power over Ethernet (PoE)
- IEEE 802.3at Power over Ethernet (PoE+)
- FCC Part 68
- EN 50173
- IEC 60332-1
- IEC 60134-2
- IEC 60754-1
- IEC 60754-2

### PHYSICAL SPECIFICATIONS

Dimensions: 1, 2, 3, and 5 meter lengths

Materials: 26 AWG, F/UTP stranded conductor, modular non-keyed, 8-position 8-conductor plug, 94V-0 rated

Color: White, Blue, Grey  
(Color matched, strain-relief boots)

### PART NUMBERS

Description	Part No.
CAT 6A, F/UTP, LSZH stranded patch cord, 1-meter length	6AZ10-**1
CAT 6A, F/UTP, LSZH stranded patch cord, 2-meter length	6AZ10-**2
CAT 6A, F/UTP, LSZH stranded patch cord, 3-meter length	6AZ10-**3
CAT 6A, F/UTP, LSZH stranded patch cord, 5-meter length	6AZ10-**5

\*\* = Colors: (BL) blue, (WH) white, (GY) grey

