

Thermal Overload Relays - RTX³ and Mounting units

Cat. N°(s) : 4 166 40..57/60..77/83..90/4 167 03..10/23..31/
4 167 43..51/60..65/70..75/80..84/86..95

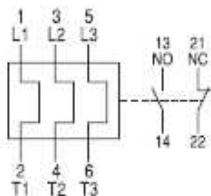


CONTENTS	PAGES
1. Description - Use	1
2. Range	1
3. Overall dimensions	1
4. Installation - Connection	2
5. General characteristics	3
6. Conformities and approvals	10
7. Curves	11
8. Auxiliaries and accessories	18

1. DESCRIPTION - USE

They ensure the thermal protection of circuits, against overload and long starting times.

Symbol:



2. RANGE

Number of Poles:

. Triple pole (3P).

Setting range:

RTX ³ 40	0.1 to 40 [A]
RTX ³ 65	9 to 65 [A]
RTX ³ 100	18 to 100 [A]
RTX ³ 150	45 to 150 [A]
RTX ³ 225	65 to 240 [A]
RTX ³ 400	85 to 400 [A]
RTX ³ 800	200 to 800 [A]

Rated operational voltage:

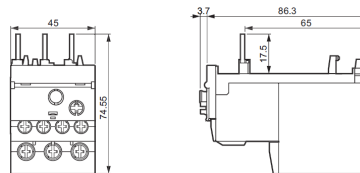
. U_e = 690 [V] for all products.

Rated frequency:

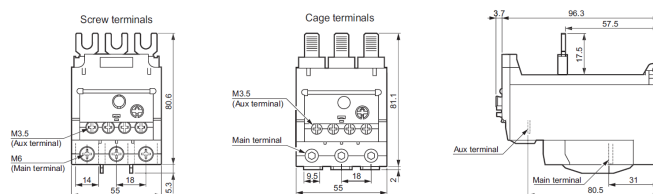
. 50 / 60 [Hz].

3. OVERALL DIMENSIONS

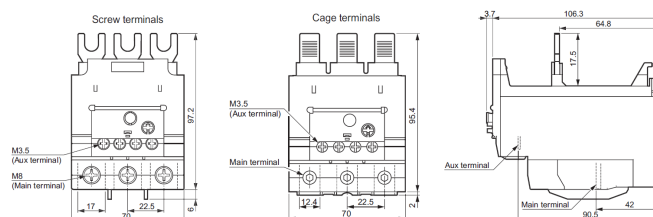
RTX³ 40:



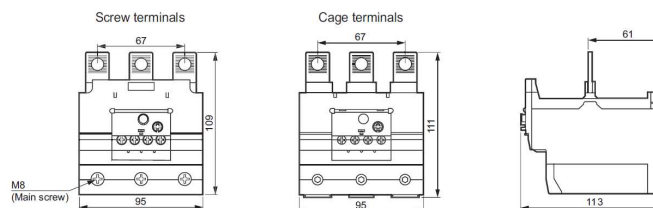
RTX³ 65:



RTX³ 100:



RTX³ 150:

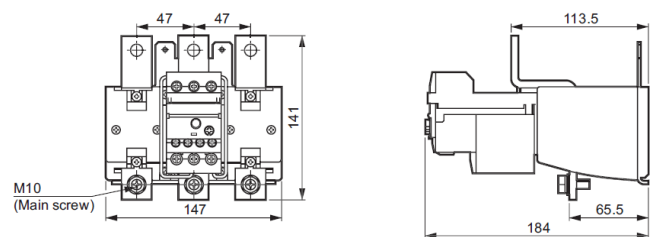


Thermal Overload Relays - RTX³ and Mounting units

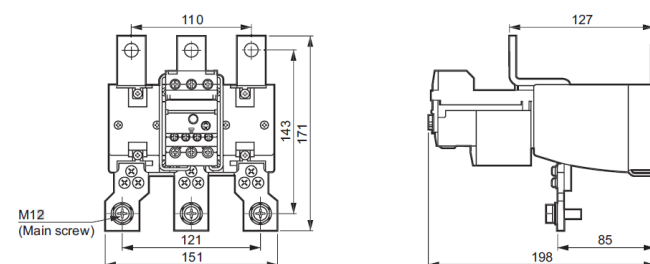
Cat. N°(s) : 4 166 40..57/60..77/83..90/4 167 03..10/23..31/
4 167 43..51/60..65/70..75/80..84/86..95

3. OVERALL DIMENSIONS (continued)

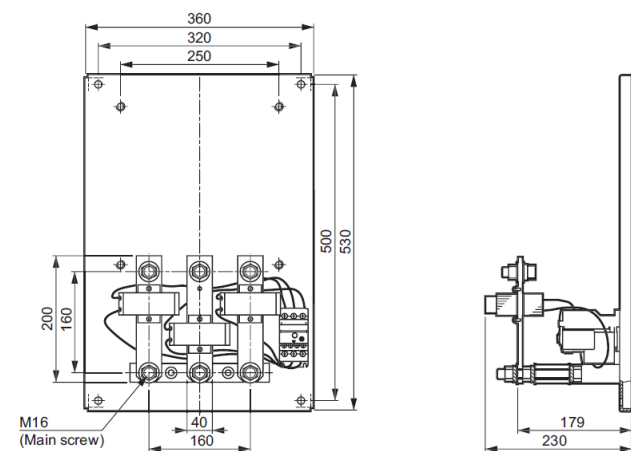
RTX³ 225:



RTX³ 400:



RTX³ 800:



4. INSTALLATION - CONNECTION

Mounting position:

- . Vertical plane.
- . Direct connection beneath CTX³ contactors.

Operating position:

- . ± 30 [°] possible, in relation to normal vertical mounting plane.

Supply:

- . Either from the top or the bottom.

4. INSTALLATION - CONNECTION (continued)

Connection : (until RTX³ 150)

- . Terminals protected against direct contact (IP20).
- . Terminals with release and captive screws.
- . Screw head : slotted and pozidriv n°2.

Tools required:

- . Pozidriv N°2 screwdriver recommended.
- . Pozidriv N°3 screwdriver for RTX³ 65 / 100 and 150.
- . Flat screwdriver $\varnothing 5$ to $\varnothing 6$ [mm] Maximum.
- . Hexagonal key (for RTX³ 65 with cage terminals).
- . Hexagonal key (for RTX³ 100 / 150 with cage terminals).
- . Flat spanner for M10 bolt (for RTX³ 225).
- . Flat spanner for M12 bolt (for RTX³ 400).
- . Flat spanner for M16 bolt (for RTX³ 800).